



Lutheran
Teacher's
Association

Newsletter

What a Journey!

As a few of you know, the journey through colloquy is multi-faceted... exhilarating, challenging, enlightening, etc. If you're unsure of what it looks like, here is a snapshot of an assignment from one of my Cue-net professors where I had to write a paragraph on Biblical interpretation. Here is what I came up with...

Interpretation

Biblical interpretation can involve certain rules and principles, the study of which is referred to as Hermeneutics. Two of the most common forms of hermeneutics are **historical grammatical hermeneutics** and the more recent, **higher critical hermeneutics**. The historical grammatical principle of biblical interpretation accepts the Bible at face value and holds to the principle of inspiration and biblical inerrancy (2 Tim. 3:16,17). God doesn't tell us how this inspiration happened, we're merely to concentrate on the words. Higher critical hermeneutics, a product of the Enlightenment (rationalism), does not accept at face value, the principle of inerrancy of biblical inspiration. A higher critical exegete's objective would be to investigate the authorship, date, and circumstance of every text of the Bible, namely scientific investigation or rationalism. Unwittingly, the exegete confers authority over scripture, cross examining God's word like a witness in a court case. The exegete's reason then plays a role in the interpretation of that particular verse - no 'sola scriptura' here! The problem here, is that reason cannot explain miraculous events (Rom.16:25), thus, the higher critical method is incompatible with the divine nature of scripture.

Human reason and scientific investigation can only tell us so much. On the other hand, the historical grammatical exegete would consider the inerrant Bible to be the only source of interpretation for itself (1 Peter 1:20,21), as human reason tends to err. Scripture then, properly understood, would be interpreted using clearer portions of scripture to explain more difficult pieces of text, the so called analogy of faith. For the historical grammatical exegete, authority is placed on the Bible, not the exegete (John 17:17). It must be remembered that the Bible is unlike other historical books in that there is a divine authority to it, truthful, unique and miraculous (Eph. 1:9), though, at the same time, human, written by men (John 21:24, 25) and should be read like any other historical literary document. The historical grammatical exegete would see the Bible as personal or anthropic, but also with analogical qualities that require greater reflection. As well, historical

...continued page 2

In this issue:

Article	Page
Recognizing Excellence in Education	pg. 2
2014 LTA Conference	pg. 3
To God Be The Glory	pg. 4
Growing in God's Grace	pg. 5
Learning More about Japanese Culture	pg. 6
Canadian Lutheran World Relief	pg. 7



WHAT A JOURNEY (CONTINUED)

context and purpose are important considerations for the historical grammatical exegete, like any other historian of the Bible. The historical grammatical exegete would keep in mind the ultimate purpose and message of the Bible, God's story of how we were created, then fell from grace, and his plan to save us (John 8:31,32). We are bound to the text of the Bible, transcendent, containing both human and divine qualities, reflecting our Lord and Savior, Jesus Christ – what a coincidence!

Yes, I have had to give up a few things in the evenings to get these assignments completed, but the way the Oilers are playing, I feel like I haven't missed anything!!

Submitted by Gary Skoye, LTA Vice President
St. Matthew Lutheran School, Stony Plain, AB

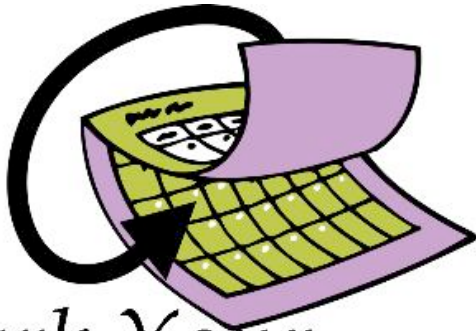
Recognizing Excellence in Lutheran Education

Do you know a Lutheran educator who always goes the extra mile? Now is your chance to celebrate his/her service to Lutheran schools. The Lutheran Teacher's Association executive is calling for nominations for the Excellence in Lutheran Education Award. This award will highlight the service of a Lutheran educator based on the following criteria:

- Strong commitment to serving the Lord
- Active in local community as well as Lutheran community
- Commitment to excellence and meeting the social, emotional, spiritual, and cognitive needs of children and families
- Equipped and willing to profess and teach Christian faith from a Lutheran perspective; desirable: Synodically trained, colloquized, or active participant in colloquy program
- Four (4) or more years experience in a Lutheran school
- Demonstrates effective educational skills
- Administrator or teacher in a Canadian Lutheran school or preschool
- Member of the LTA, and member of other professional associations

Letters describing how the nominee meets the criteria for the Excellence in Lutheran Education Award should be sent to LTA President, Susan Eisner either by email: seisner@hopelcs.ca or by regular mail: c/o Hope Lutheran Christian School 3151 York St., Port Coquitlam, BC, V3B4A7

Nominations must be received by May 15, 2014



*Mark Your
Calendar*

2014 LTA Conference

First Lutheran Christian School
Kelowna, BC

August 18-21, 2014

Watch for more details coming soon!



Don't Miss

To God Be The Glory

The Lord's love and the power of His words to change the lives of children is evident in our Lutheran schools. Grace Lutheran Church in Osoyoos, BC has been operating Good Shepherd Christian School since 1990. Over the past twenty-three years many students have learned of God's love for them, have heard His word on a daily basis, and have proclaimed Jesus as their Lord and Saviour. Good Shepherd, like all Christian schools, has students with varying degrees of knowledge of God and His word. No student, regardless of their denomination (or lack thereof) is turned away from the opportunity to be ministered to, and it is this very fact that sees God's love shine through in the most amazing ways.

Over the years many students have come and gone, and it is always so uplifting to see how God continues to work in their lives after they leave Good Shepherd. The staff and congregation are thrilled to see high school students come back to spend time at Good Shepherd when they have a break from classes. They truly know this school, God's school, as their home. Over the last year there have been three even more uplifting examples of the power of God's word and love in their lives. Firstly, Sydney Fernandes, a grade twelve student has done her Career Prep courses for both grade eleven and grade twelve here at Good Shepherd. She loves the school so much and has organized her schedule so that she can come to Good Shepherd for half days, five days a week for the second half of both her senior years. She demonstrates the love, patience, care, and forgiveness that she learned from God here at Good Shepherd.

Secondly, this year we have several Special Education students at Good Shepherd and found ourselves in need of another Education Assistant. The Lord worked His will on the process of finding someone that would do the job with Christian love. We now have Jenna Riznek, a former student working with our intermediate Special Education students. It was very challenging finding someone who could do the job as the Lord would have them, and the Lord answered our prayers! Jenna knows and loves the Lord and is able to demonstrate this as she works with the students.

Thirdly, the Burris family, although not a Grace Lutheran Church family, but a Good Shepherd family has turned to the Lord through Grace Lutheran Church in several ways. Sadly, the death of their mother brought them back as they turned to the Lord for reassurance and strength at her service here at Grace. Joyfully, when Jennifer Burris was to be wed, it was to her spiritual home here at Grace that she turned. Thirdly, the Lord worked in the heart of Daniel Burris as he came back with his young, two-year old son to have him baptized here at Grace. We joyfully await young Isaac as a student here at Good Shepherd in the upcoming years.

God has worked through the teachers and pastor to bring God into the hearts and minds of many, many students. We thank and praise Him for the joy He gives in each of these young lives. We pray that God will continue to bless our church, school, and the families in our community. May all praises go to God and His gracious work in our lives.

Submitted by Angela Westcott
Good Shepherd Christian School, Osoyoos, BC



Growing in God's Grace

The winter season has been an extremely busy one for Hope Lutheran Christian School in Port Coquitlam, BC. Of course, the typical stresses existed – Christmas program, inclement weather issues, catching up before the break, but Hope had one more thing on the go.

In anticipation for the upcoming school year, Hope needed to find a home for its High School program. Hope had been renting a facility from another local church. It was told to the school that the other church had plans to move out and to build a new place for them to worship, and so their current building, the one Hope was renting, would be going up for sale.

In anticipation of the listing, the church and school constructed a Business Plan and held multiple information sessions regarding the feasibility of purchasing this new property. After extensive discussions with the Church Extension Fund (CEF)

and with other ministry partners, it was determined that we had the capacity to purchase the second site.

It was with great excitement and celebration that on January 23, the e-mail went out to the whole Hope community. We bought a building! God has blessed us beyond our imaginations, and we are thankful.

Now, we continue to grow. While we have secured a second campus, Hope is still undergoing changes and improvements at it's elementary site. Please continue to pray that God would provide so that His name can be glorified through the ministry at Hope.

Submitted by Mike Schiemann
Hope Lutheran Christian School, Port Coquitlam, BC

hope lutheran
CHRISTIAN SCHOOL



Learning More about Japanese Culture



Hope Lutheran's grade six class field trip to the Vancouver Japanese School was an incredible experience to learn more about Japanese art, culture, beliefs, and music. As part of our social studies unit on Japan, the students participated in a tea ceremony, wore kimonos, danced, played traditional games, built an origami crane, and watched an aikido demonstration.

Submitted by Dan Mathew
Hope Lutheran Christian School, Port Coquitlam, BC

CLWR Sweater Drive for Syrian Refugees

As you may know, in the fall of 2013 CLWR launched a sweater drive for Syrian refugees that received amazing support from Lutherans across Canada. We can now say that Canadian Lutherans donated approximately 60,000 sweaters (six times the original goal!). The first two shipments of sweaters (containing over 47,000 sweaters) are scheduled to arrive in Jordan at the end of January and in early February, and will make it to the Za'atari refugee camp about 10 days after their arrival. The third shipment is scheduled to leave CLWR's Winnipeg warehouse early in February.

CLWR staff members were recently in Jordan, visiting with families who are or will be receiving aid from Lutherans. [Basel Al Ahmed](#) (pictured with members of his family) is looking forward to the sweaters' arrival. Their tent is cold during the winter months, and they often wake up with frost on their blankets. They extend their thanks to Canadians for the extra warmth the sweaters will bring them.





NEW Check out the
LTA Website at
www.lutheranteachers.com

Check out the LTA
Group on Facebook

Network with teachers
throughout Canada,
share lesson ideas,
ask questions, get advice



"Listening Ear"

Need a confidential listening ear or sounding board?

Contact our pastoral advisor, Pastor Mark Lobitz.
He is a certified specialist in pastoral counseling with
professional organizations in Canada and the U.S., and has
considerable experience in pastoral counseling.

Pastor Lobitz is also a former Lutheran school teacher.
Phone: 403-637-2650 E-Mail: mjlobitz@gmail.com

Send your newsletter submissions to Leanne Zimmer at
lzimmer07@gmail.com

The LTA Newsletter is published three times each year:
November, February and May.

Submissions are due the second last Friday of the month
prior to publication.

LTA EXECUTIVE



SUSAN EISNER
President
Hope in Port Coquitlam, BC.



GARY SKOYE
Vice President
St Matthew in Stony Plain, AB



NICOLE OTTERMAN
Secretary
St Matthew in Stony Plain, AB



JENNIFER WATSON
Treasurer
Hope in Port Coquitlam, BC



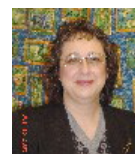
MARK LOBITZ
Pastoral Advisor
Shepherd of the Valley in
Canmore, AB



DARYL BECKER
District Advisor
ABC District in Edmonton, AB



DARRYL & LEANNE
ZIMMER
Communications Directors
Prince of Peace in Calgary, AB



BETTY ANN CHANDLER
Preschool Representative
Foothills in Calgary, AB